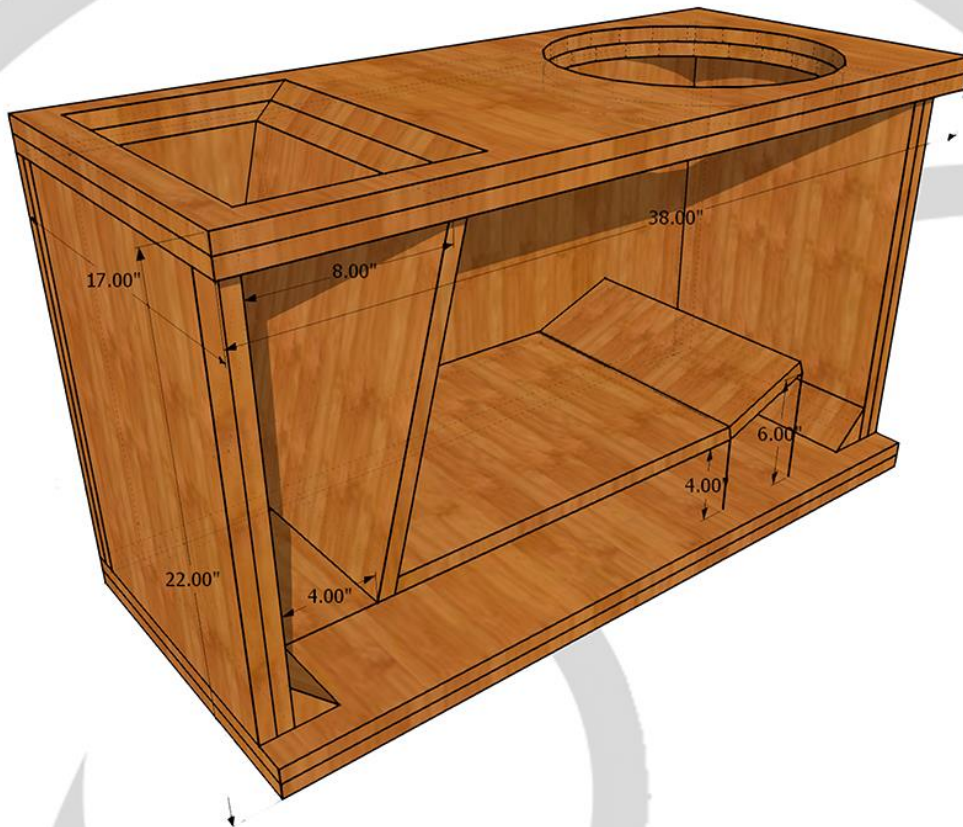




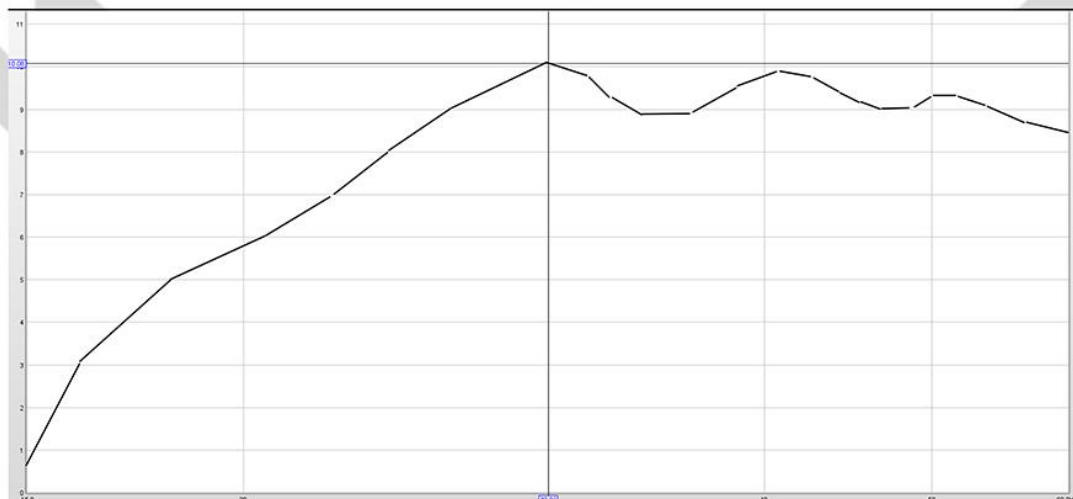
BASSFACE

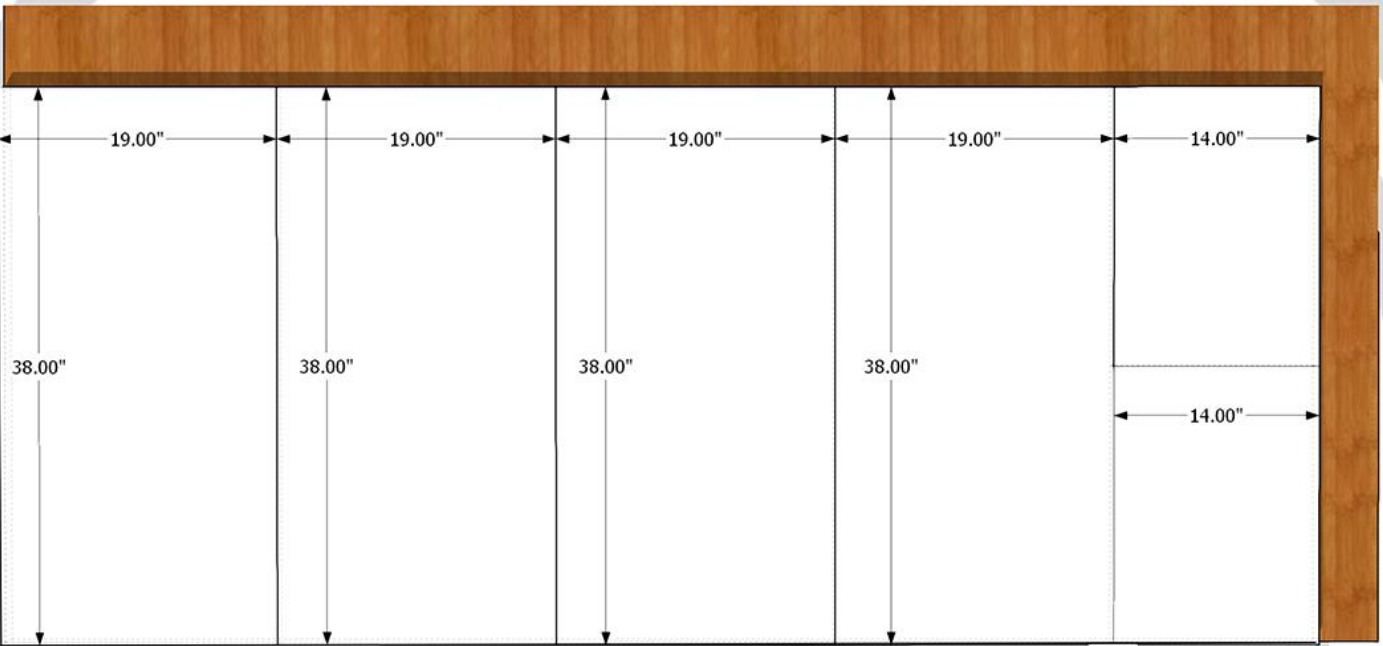
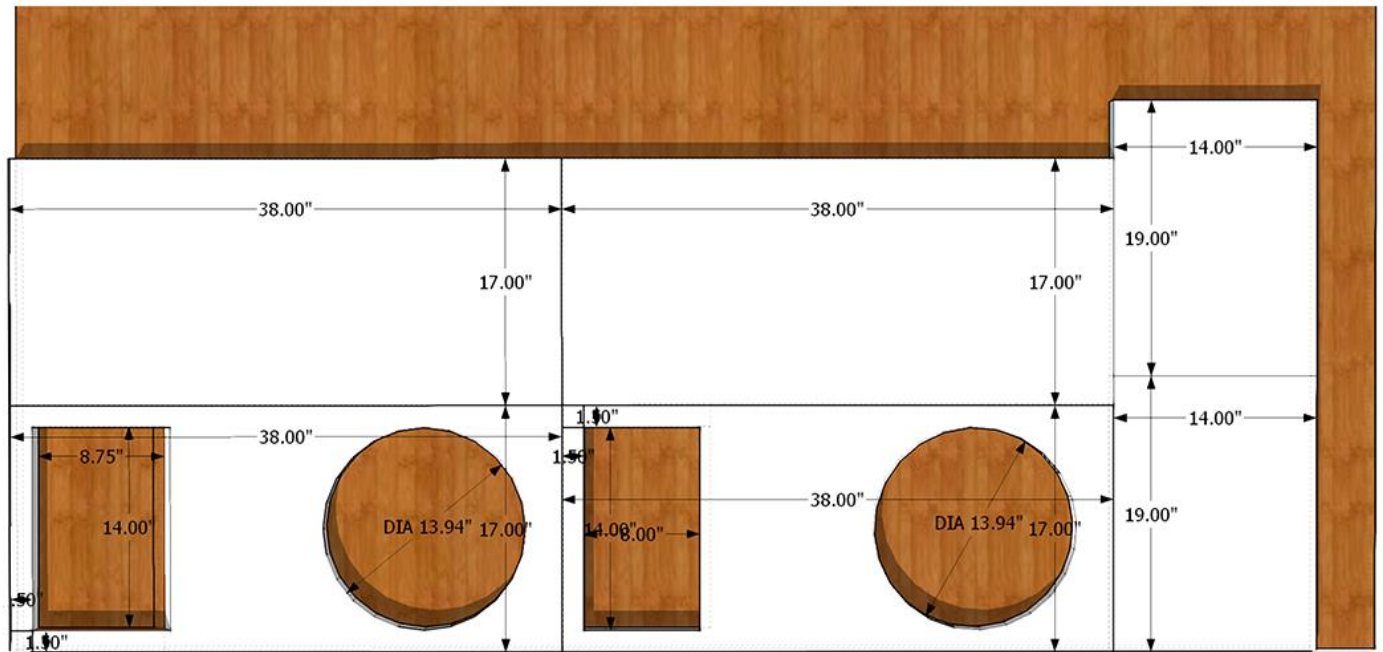
BIG RED15.5 HIGH OUTPUT ENCLOSURE



*This is a 3.53cubes (100L) box tuned to 30hz. Designed for high output and good bandwidth.
The flared port is designed to maximise the potential efficiency and bandwidth for a box of this size*

SPL Graph





Top1: 965mmX432mm
 355mm diameter cutout.
 port cutout 355mmX203mm
 45*cut on the subside of the port cutout

Top1: 38"X17"
 14" diameter cutout.
 port cutout 14"X8"
 45*cut on the subside of the port cutout.

Top2: 965mmX432mm
 355mm diameter cutout.
 port cutout 355mmX222mm
 45*cut on the subside of the port cutout

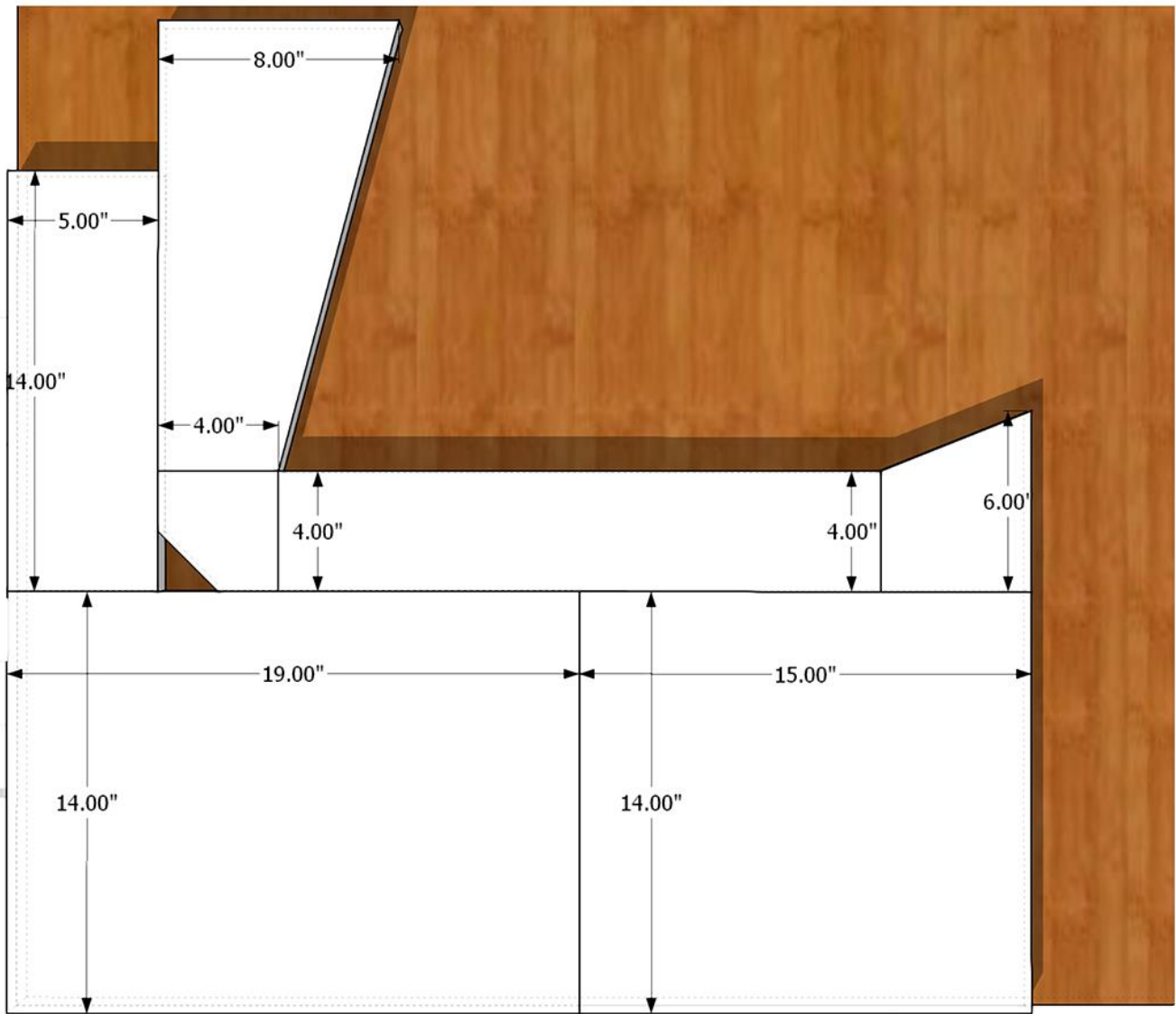
Top1: 38"X17"
 14" diameter cutout.
 port cutout 14"X8.75"
 45*cut on the subside of the port cutout.

2X Bottom: 965mmX432mm

2X Bottom: 38"X17"

2X Front: 965mmX483mm
 2X Back: 965mmX483mm
 2X Left: 483mmX355mm
 2X Right: 483mmX355mm

2XFront: 38"X19"
 2X Back: 38"X19"
 2X Left: 19"X14"
 2X Right 19"X14"



Now for the port. The crucial bit.

*Port exit: 381mmX355mm
 Port main: 483mmX355mm
 Port beginning: : 355mmX127mm*

*Port exit: 15"X14"
 Port main: 19"X14"
 Port beginning 14"X5:*

Use the guide to align the port pieces while the glue sets